



Artists Recording Collective  
ARTISTSRECORDINGCOLLECTIVE.BIZ

2020

# STUDENT JAZZ JAM SESSION

“C”



THIS MATERIAL IS NOT FOR SALE  
AND IS DISTRIBUTED UNDER FAIR USE  
FOR EDUCATIONAL USES ONLY

# 17 U.S. Code §107.

## Limitations on exclusive rights: Fair use

[U.S. Code](#) // [Notes](#)

Notwithstanding the provisions of sections 106 and 106A, the fair use of a copyrighted work, [including](#) such use by reproduction in [copies](#) or [phonorecords](#) or by any other means specified by that section, for purposes [such as](#) criticism, comment, news reporting, teaching ([including](#) multiple [copies](#) for classroom use), scholarship, or research, is not an infringement of copyright. In determining whether the use made of a work in any particular case is a fair use the factors to be considered shall include—

(1) the purpose and character of the use, [including](#) whether such use is of a commercial nature or is for nonprofit educational purposes;

(2) the nature of the copyrighted work;

(3) the amount and substantiality of the portion used in relation to the copyrighted work as a whole; and

(4) the effect of the use upon the potential market for or value of the copyrighted work.

The fact that a work is unpublished shall not itself bar a finding of fair use if such finding is made upon consideration of all the above factors.

([Pub. L. 94–553, title I, §101](#), Oct. 19, 1976, [90 Stat. 2546](#); [Pub. L. 101–650, title VI, §607](#), Dec. 1, 1990, [104 Stat. 5132](#); [Pub. L. 102–492](#), Oct. 24, 1992, [106 Stat. 3145](#).)

# Educational Exemptions

## in the U.S. Copyright Code

The U.S. Copyright Code provides for the educational use of copyrighted material *without* the permission of the copyright holder under *certain conditions*.

---

|                                 |  |
|---------------------------------|--|
| <b>Name:</b>                    | Christopher L. Burnett   |
| <b>Job Title:</b>               | Jazz Educator and Jazz Combo Instructor  |
| <b>Institution:</b>             | Artists Recording Collective LLC   |
| <b>Title of Work Used:</b>      | SELECTED WORKS (SEE PDF LIST EACH SEASON)  |
| <b>Author/Copyright Holder:</b> | VARIOUS COMPOSERS AND PUBLISHERS (SEE PDF LIST EACH SEASON)  |
| <b>Date of Use:</b>             |  |
| <b>Description of Work:</b>     | ARC Jazz Jam Session at 424 Lounge is an educational program that teaches jazz literature, song forms, styles and improvisation in the applied setting of a jazz venue. The works used are not sold or presented for profit. |

---

# ARC JAZZ JAM SESSION @ 424 LOUNGE

2020 SEASON SELECTED WORKS - EDITION: 12/24/19

| WORK TITLE                                    | COMPOSER             | SONG FORM             | STYLE      |
|---|----------------------|-----------------------|------------|
| <b><u>ALL OF ME</u></b>                       | G. MARKS/ S. SIMONS  | ABAC                  | SWING      |
| <b><u>BLUE BOSSA</u></b>                      | KENNY DORHAM         | ABCB                  | BOSSA NOVA |
| <b><u>BLUE MONK</u></b>                       | THELONIOUS MONK      | 12 BAR BLUES          | SWING      |
| <b><u>FREDDIE FREELOADER</u></b>              | MILES DAVIS          | 12 BAR BLUES          | SWING      |
| <b><u>GEORGIA ON MY MIND</u></b>              | HOAGY CARMICHAEL     | AABA                  | BALLAD     |
| <b><u>GIRL FROM IMPANEMA</u></b>              | ANTONIO CARLOS JOBIM | AABA                  | BOSSA NOVA |
| <b><u>IMPRESSIONS</u></b>                     | JOHN COLTRANE        | AABA                  | SWING      |
| <b><u>KILLER JOE</u></b>                      | BENNY GOLSON         | AABA                  | SWING      |
| <b><u>MISTY</u></b>                           | ERROLL GARNER        | AABA                  | BALLAD     |
| <b><u>MR. P.C.</u></b>                        | JOHN COLTRANE        | 12 BAR MINOR BLUES    | SWING      |
| <b><u>NOW'S THE TIME</u></b>                  | CHARLIE PARKER       | 12 BAR BLUES          | SWING      |
| <b><u>RECORDA-ME</u></b>                      | JOE HENDERSON        | ABCD                  | BOSSA NOVA |
| <b><u>SATIN DOLL</u></b>                      | DUKE ELLINGTON       | AABA                  | SWING      |
| <b><u>SONG FOR MY FATHER</u></b>              | HORACE SILVER        | AAB                   | LATIN      |
| <b><u>STRAIGHT NO CHASER</u></b>              | THELONIOUS MONK      | 12 BAR BLUES          | SWING      |
| <b><u>SUGAR</u></b>                           | STANLEY TURRENTINE   | 16 BAR FORM - C MINOR | SWING      |
| <b><u>SUMMERTIME</u></b>                      | GEORGE GERSHWIN      | ABCD                  | SWING      |
| <b><u>THERE WILL NEVER BE ANOTHER YOU</u></b> | HARRY WARREN         | ABAC                  | SWING      |
| <b><u>WATERMELON MAN</u></b>                  | HERBIE HANCOCK       | 12 BAR BLUES          | JAZZ ROCK  |
| <b><u>WHEN SUNNY GETS BLUE</u></b>            | MARVIN FISHER        | AABA                  | BALLAD     |
|   |                      |                       |            |
| ( 20 WORK TITLES - CLICK TITLE FOR INFO )     |                      |                       |            |



**CD TRACK 1: TUNING NOTES (Concert B $\flat$  & A)**  
 Get in tune with Track 1 before progressing on to Track 2 below.



## 2. Now's The Time

By Charlie Parker

PLAY 13 CHORUSES (♩ = 154)

Chords: F7, B $\flat$ 7, B $\circ$ 7, F7, C-7, F7, B $\flat$ 7, B $\circ$ 7, F7, A-7, D7, G-7, C7, A-7, D7, G-7, C7.

(1st time only)

Copyright © 1945 Atlantic Music Corp. Renewed & Assigned 1973  
 © 1976 Atlantic Music Corp. Used by permission.  
 International Copyright Secured. Made in U.S.A. All Rights Reserved.

### SOLOS

Chords: F7, B $\flat$ 7, B $\circ$ 7, F7, F7, C-7, F7, B $\flat$ 7, B $\circ$ 7, F7, A-7, D7, G-7, C7, A-7, D7, G-7, C7.

## 2. Billie's Bounce

(Also known as Bill's Bounce. Dedicated to Billy Shaw)

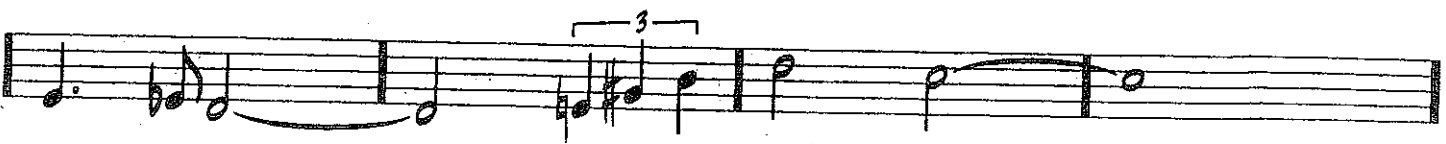
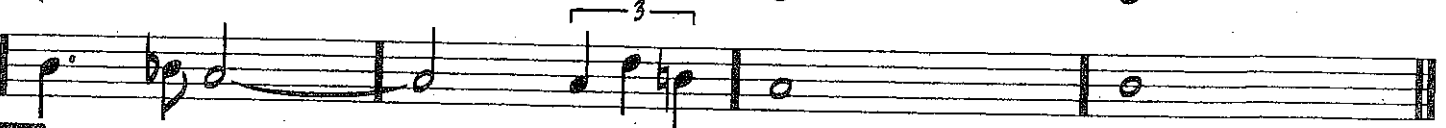
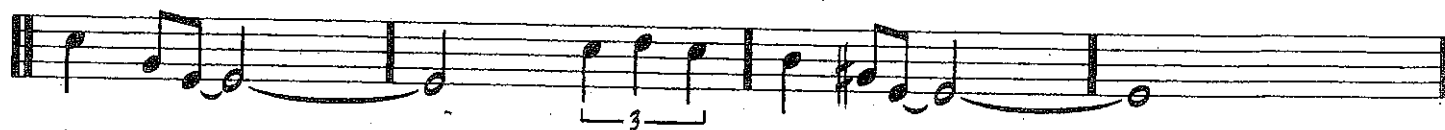
By Charlie Parker

Chords: F7, B $\flat$ 7, B $\circ$ 7, F7, C-7, F7, B $\circ$ 7, F7, A-7, D7, G-7, C7, A-7, D7, G-7, C7.

(1st time only)

Copyright © 1945 Atlantic Music Corp. Renewed & Assigned 1973  
 © 1976 Atlantic Music Corp. Used by permission.  
 International Copyright Secured. Made in U.S.A. All Rights Reserved.

(MED. SWING)

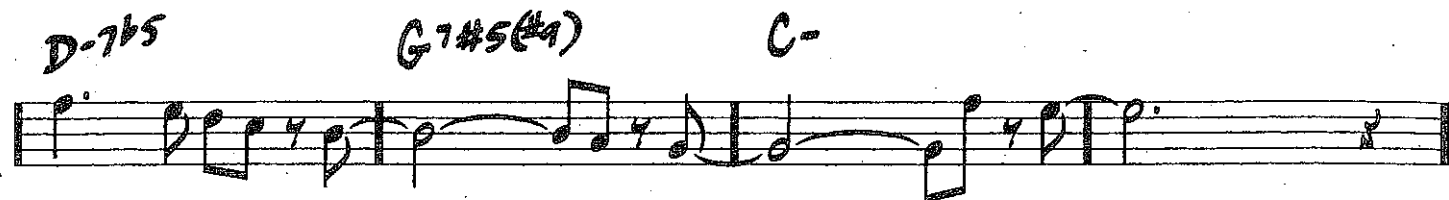
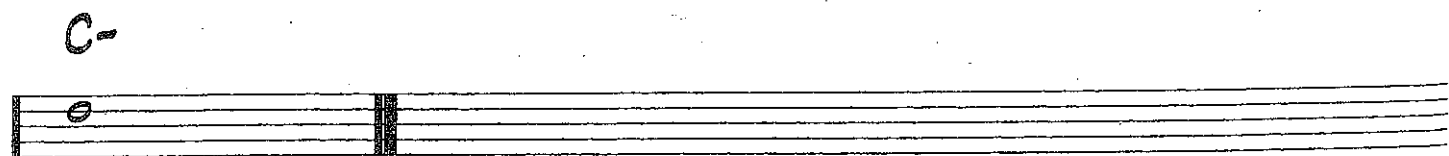
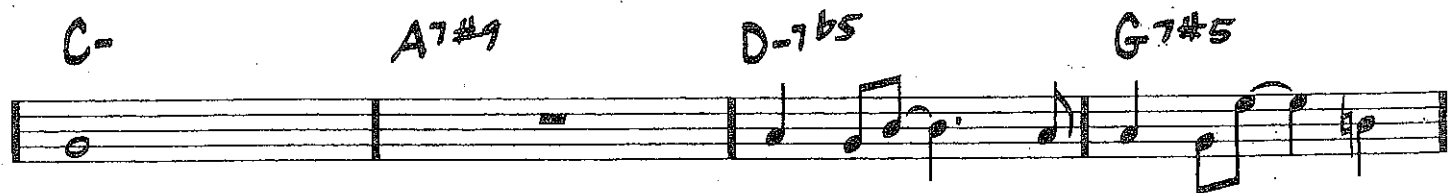
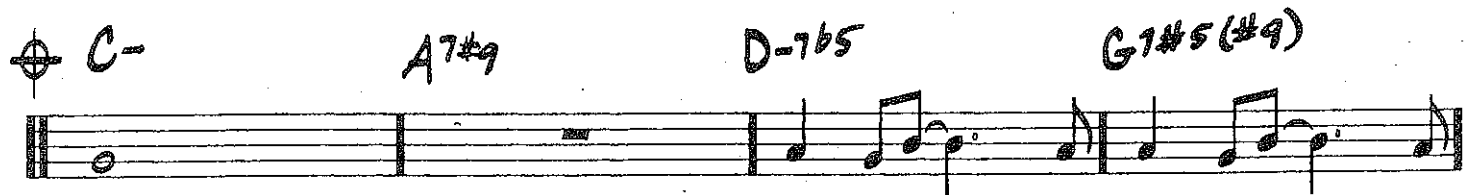
ALL OF ME-SEYMOUR SIMONS/  
GERALD MARKS**A** C<sup>6</sup>E<sup>7</sup>A<sup>7</sup>D<sup>-7</sup>E<sup>7</sup>A<sup>-7</sup>D<sup>7</sup>D<sup>-7</sup>G<sup>7</sup>**B** C<sup>6</sup>E<sup>7</sup>A<sup>7</sup>D<sup>-7</sup>F<sup>6</sup>F<sup>-6</sup>C<sup>major 7</sup> E<sup>-7b5</sup>/  
B<sup>b</sup>A<sup>7</sup>D<sup>-7</sup>G<sup>7</sup>C<sup>6</sup>(E<sup>b</sup>o<sup>7</sup>D<sup>-7</sup>G<sup>7</sup>)

FINE

(MED. UP BOSSA)

**BLUE BOSSA**

- KENNY DIRHAM

PLAY HEAD TWICE  
AFTER SOLOS, D.S. AL



(MOD. BLUES)

**BLUE MONK**

-THELONIOUS MONK

Handwritten musical score for "Blue Monk" by Thelonious Monk. The score is written on four staves in treble clef with a key signature of two flats (Bb and Eb) and a 4/4 time signature. The first staff contains measures 1-4 with chords Bb, Eb, and Bb. The second staff contains measures 5-8 with chords Bb7 and Eb, including a triplet in measure 5. The third staff contains measures 9-12 with chords Bb and F7, including a triplet in measure 10. The fourth staff contains measures 13-16 with chord Bb. The score ends with two empty staves.



CD TRACK 1: TUNING NOTES - Get in tune with Track 1 before progressing on to Track 2 below.



## 2. Freddie Freeloader



Play 11 Choruses (♩ = 96)

by Miles Davis

### BLUES

Blues section musical notation. It consists of three staves of music. The first staff has a treble clef and a key signature of two flats (Bb and Eb). The first measure is marked with a Bb7 chord. The second staff has a treble clef and a key signature of two flats. The first measure is marked with an Eb7 chord, and the second measure is marked with a Bb7 chord. The third staff has a treble clef and a key signature of two flats. The first measure is marked with an F7 chord, the second with an Eb7 chord, and the third with an Ab7 chord. The notation includes various musical symbols such as notes, rests, and accidentals.

### SOLOS

Solo section musical notation. It consists of a single staff of music with a treble clef and a key signature of two flats. The first measure is marked with a Bb7 chord. The notation includes various musical symbols such as notes, rests, and accidentals.

Solo section musical notation. It consists of a single staff of music with a treble clef and a key signature of two flats. The first measure is marked with an Eb7 chord, and the second measure is marked with a Bb7 chord. The notation includes various musical symbols such as notes, rests, and accidentals.

Solo section musical notation. It consists of a single staff of music with a treble clef and a key signature of two flats. The first measure is marked with an F7 chord, the second with an Eb7 chord, and the third with an Ab7 chord. The notation includes various musical symbols such as notes, rests, and accidentals.

Solo section musical notation. It consists of a single staff of music with a treble clef and a key signature of two flats. The first measure is marked with an F7 chord, the second with an Eb7 chord, and the third with an Ab7 chord. The notation includes various musical symbols such as notes, rests, and accidentals. The phrase "fine 2nd X" is written below the staff.

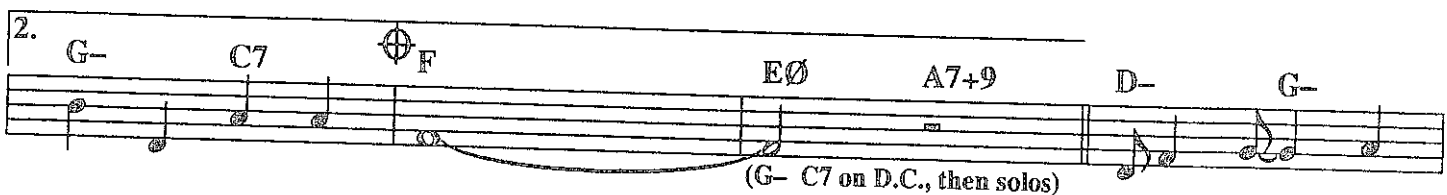
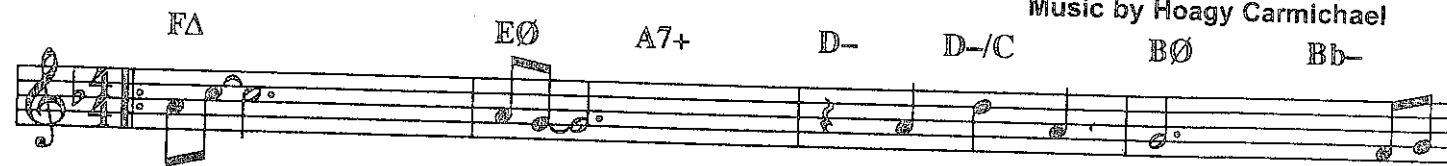


# 7. Georgia On My Mind



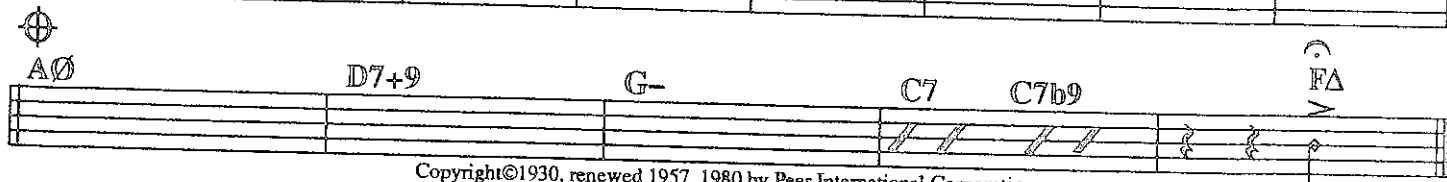
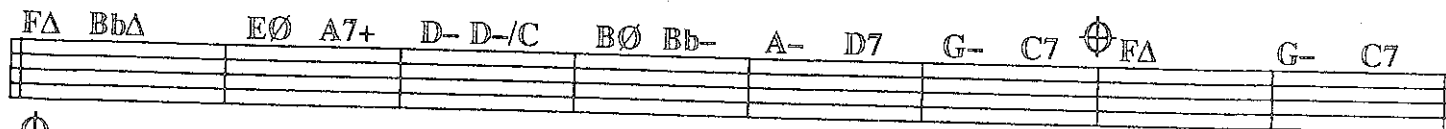
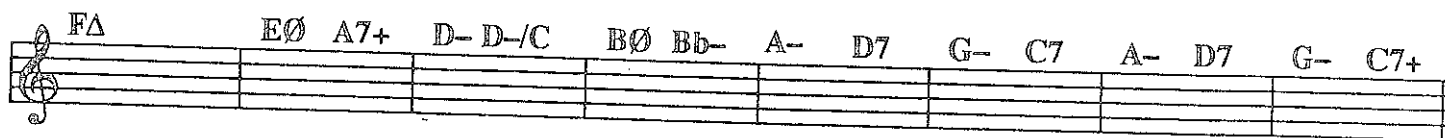
Play 2 Choruses (♩ = 56)

Lyrics by Stuart Gorrell  
Music by Hoagy Carmichael



SOLOS

D.C. at 2nd ending



(BOSSA)

## THE GIRL FROM IPANEMA

(GARÔTA DE IPANEMA)

-ANTONIO CARLOS JOBIM/NORMAN GIMBEL/VINICIUS DE MORAES

Chords and musical notation for "The Girl from Ipanema":

- Staff 1: Fmaj7, G7
- Staff 2: G-7, Gb7b5, 1. Fmaj7, Gb7b5
- Staff 3: 2. Fmaj7, Gbmaj7
- Staff 4: B7, F#-7
- Staff 5: D7, G-7
- Staff 6: Eb7, A-7, D7b9(#11)
- Staff 7: G-7, C7b9(#11), Fmaj7
- Staff 8: G7, G-7, Gb7b5
- Staff 9: Fmaj7, (Gb7b5)
- Staff 10: (Empty staff)



## CD TRACK 1: TUNING NOTES

Get in tune with Track 1 before progressing on to Track 2 below.



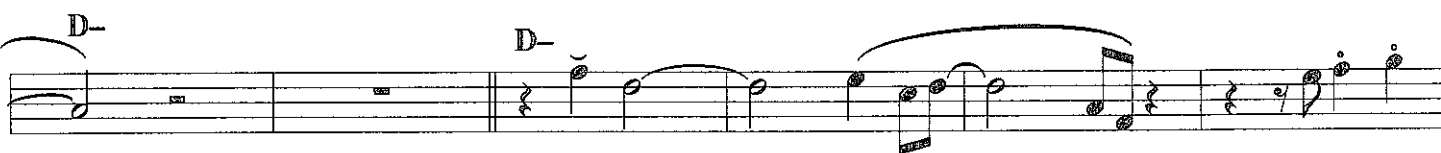
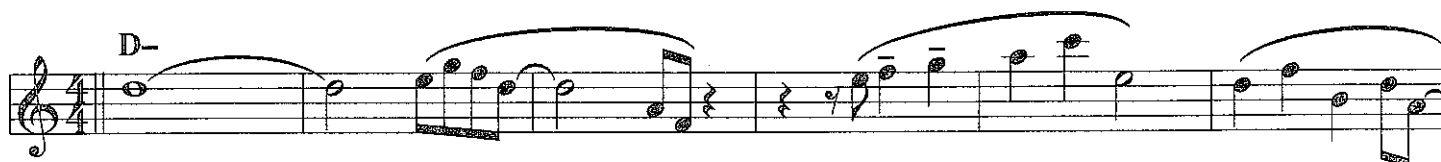
# 2. Impressions

PLAY 5 CHORUSES (♩ = 112)

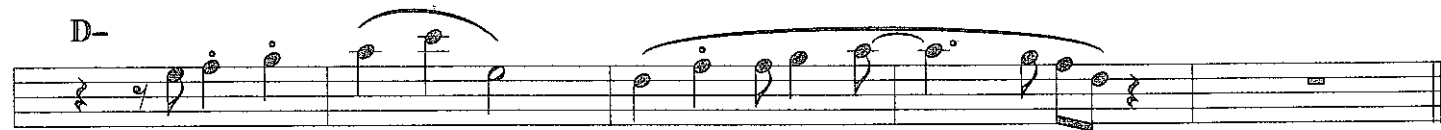
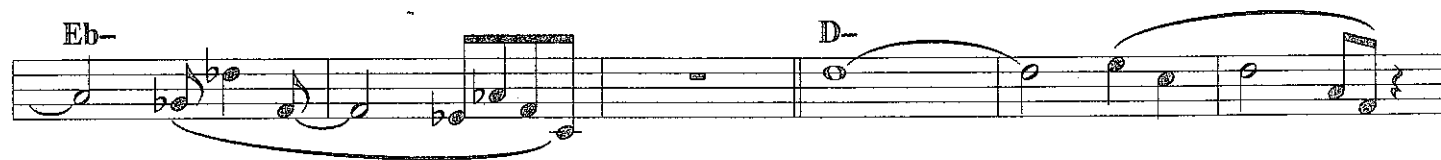
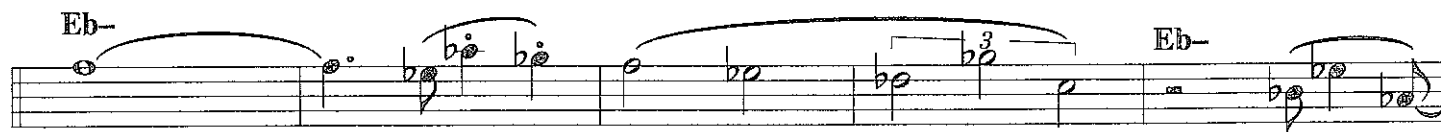
By John Coltrane

Memorize both scales. Know where the 3rds and 7ths are. *Feel* the 8-bar phrases. Listen to the half-step rise to the bridge. John Coltrane did wonders on this song.

Famous Recording: John Coltrane (MCAD-5887)



### BRIDGE



### SOLOS

### BRIDGE



Track ends on D-



# 1. Killer Joe



PLAY 6 TIMES (♩ = 104)

By Benny Golson

C7 Bb7 C7 Bb7 C7 Bb7 C7 Bb7 C7 Bb7 C7 Bb7 C7 Bb7 C7 Bb7

## SOLOS

C7 Bb7 C7 Bb7 C7 Bb7 C7 Bb7

## BRIDGE

Eø A7b9 Eb- Ab7 A7 Ab7 E- A7 C7 Bb7 C7 Bb7 C7 Bb7 C7 Bb7



C7 Bb7

Repeat Over & Over & Fade



# 3. Misty



Play 2 Choruses (♩ = 96)

Play-a-long is recorded with DOUBLE-TIME feel

Lyrics by Johnny Burke  
Music by Erroll Garner

Chorus 1: EbΔ Bb- ED7 AbΔ

Chorus 2: Ab- Db7 EbΔ C- F- Bb7

1. G-(Db7) C7 F- Bb7 2. EbΔ Ab- Eb

Bb- Eb7b9 AbΔ AbΔ A- D7

C- F7 G- C7 F- Bb7 3. EbΔ C- F- Bb7

D.C. al 3rd ending

## SOLOS

Chorus 1: EbΔ Bb- Eb7 AbΔ Ab- Db7 EbΔ C- F- Bb7 G-(Db7) C7 F- Bb7

Chorus 2: EbΔ Bb- Eb7 AbΔ Ab- Db7 EbΔ C- F- Bb7 EbΔ Ab- EbΔ

Chorus 3: Bb- Eb7b9 AbΔ AbΔ A- D7 C- F7 G- C7 F- Bb7

Chorus 4: EbΔ Bb- Eb7 AbΔ Ab- Db7 EbΔ C- F- Bb7 EbΔ C- (F- Bb7)

Chorus 5: G- C7+9 F- Bb7

Chorus 6: AØ Ab- G- Gb7 F- EA EbΔ

(BRIGHT JAZZ)

**MR. P.C.**

-JOHN COLTRANE

Handwritten musical notation for the first system, featuring three staves with notes and accidentals. The notation is in 4/4 time and includes the following handwritten labels above the staves:

- Staff 1: C-
- Staff 2: F- C-
- Staff 3: A<sup>b</sup>7 G<sup>7</sup> C-

The notation consists of eighth and quarter notes, with some measures containing rests. The key signature is one flat (Bb).



(BOSSA)

# RECORDA-ME

337

-JOE HENDERSON

A-7

C-7

F7

Bbmaj7

Bb-7

Eb7

Abmaj7

Ab-7

Db7

Gbmaj7

G-7

C7

Fmaj7

E7#9 1.

2. (E7#9)

(MED.)

# SATIN DOLL

-DUKE ELLINGTON

Handwritten musical score for "Satin Doll" by Duke Ellington. The score is written on ten staves in 4/4 time. It includes various musical notations such as eighth notes, quarter notes, and rests, along with handwritten chord symbols above the staves. The key signature has one flat (Bb). The piece concludes with a double bar line and the word "FINE".

Chord symbols and musical notation are as follows:

- Staff 1: D-7, G7, D-7, G7, E-7, A7
- Staff 2: E-7, A7, A-7, D7, Ab-7, Db7
- Staff 3: 2. Cmaj7, D-7, E-7, A7, 2. Cmaj7
- Staff 4: G-7, C7, G-7, C7, Fmaj7
- Staff 5: A-7, D7, A-7, D7, G7, D-7, G7
- Staff 6: D-7, G7, D-7, G7, E-7, A7, E-7, A7
- Staff 7: A-7, D7, Ab-7, Db7, Cmaj7 (D-7, E-7, A7)

FINE



**By Horace Silver**

**The F blues scale, or minor pentatonic scale, may be applied liberally. The blues scale is usually played over the “break.” Start solos simply and build to a climax.**

**Famous Recording: Horace Silver Quintet (Blue Note BST/B21Y-84185; CD CDP 7 961 102)**

**NOTE: The original version of this passage is at the bottom of the page.**

**FORM AAB**

[illegible]

## BRIDGE

1. F- 2. F- Eb7 F-  
F- Eb7 Db7 G-/C F-  
BREAK

SOLOS

[illegible]

## F BLUES SCALE

### F Minor Pentatonic Scale

**Original version:**

The musical score for 'The Rose Tree' is written for a single melodic line in treble clef, 4/4 time. The key signature has one flat (B-flat). The melody begins with a half rest, followed by a quarter note G4, a quarter note F4, and a half note E4. A double bar line follows. The second measure starts with a half note D4, a quarter note C4, and a half note B3. The third measure contains a triplet of eighth notes: B3, A3, and G3. The fourth measure has a half note F3, a quarter note E3, and a half note D3. The fifth measure features a triplet of eighth notes: C3, B2, and A2. The sixth measure has a half note G2, a quarter note F2, and a half note E2. The seventh measure contains a triplet of eighth notes: D2, C2, and B1. The eighth measure has a half note A1, a quarter note G1, and a half note F1. The ninth measure features a triplet of eighth notes: E1, D1, and C1. The tenth measure has a half note B1, a quarter note A1, and a half note G1. The eleventh measure contains a triplet of eighth notes: F1, E1, and D1. The twelfth measure has a half note C1, a quarter note B1, and a half note A1. The thirteenth measure features a triplet of eighth notes: G1, F1, and E1. The piece concludes with a half note D1, a quarter note C1, and a half note B1. The score includes various musical notations such as rests, notes, bar lines, and triplets.

386

(MED. BLUES)

# STRAIGHT NO CHASER

-THELONIOUS MONK

S  
B<sup>b</sup>7E<sup>b</sup>7B<sup>b</sup>7E<sup>b</sup>7B<sup>b</sup>7

F7

1.  
B<sup>b</sup>72.  
B<sup>b</sup>7

AFTER SOLOS, D.S. AL

B<sup>b</sup>7

(SWING)

SUGAR

-STANLEY TURRENTINE

Handwritten musical score for "SUGAR" by Stanley Turrentine. The score is written on five staves in 4/4 time with a key signature of two flats (Bb, Eb). The notation includes various chords and triplet markings.

Chords and markings across the staves:

- Staff 1: C-7, D-7b5, G7#5, C-7
- Staff 2: G7#5, C-7, D-7b5
- Staff 3: G7#5, C-7, Gb7, F-7
- Staff 4: Eb7, D-7b5, G7#5, Ab7
- Staff 5: G7#5, C-7, (Dbmaj7)

Triplet markings (3) are present above several groups of notes on all five staves.



# 5. Summertime



PLAY 8 CHORUSES (♩ = 108)

By DuBose Hayward & George Gershwin

This song really employs only 3 scales. Since it is in a minor key, melodies seem to come easily.  
Work on connecting the A7+9 to the D- smoothly.

Famous Recording: John Coltrane (Atlantic SD-1361/SD-1361-2)

First system: D- (D7+9)  
Second system: G- EØ A7+9  
Third system: D- D- G- C7  
Fourth system: FA EØ A7+9 D- A7+9 1st Time Only

## SOLOS

First system: D- (D7+9)  
Second system: G- EØ A7+9  
Third system: D- G- C7  
Fourth system: FA A7+9 EØ D- A7+9  
ENDS ON D- VAMP

# (UP) THERE WILL NEVER BE ANOTHER YOU

- HARRY WARREN / MACK GORDON

Ebmaj7

D-7b5

G7



C-7

Bb-7

Eb7



Abmaj7

Db9

Ebmaj7

C-7



F7

F-7

Bb7



Ebmaj7

D-7b5

G7



C-7

Bb-7

Eb7



Abmaj7

Db9

Ebmaj7

A-7

D7



Ebmaj7

D7

G-7

C7

F-7

Bb7

Eb

(Bb7)



FINE





# 6. Watermelon Man



PLAY 8 CHORUSES (♩ = 96)

By Herbie Hancock

F blues scale may be used extensively. Play with even-eighths "rock feel."  
Rhythmic repetition can create excitement. It is a 16-bar blues.

Famous Recording: Herbie Hancock (Blue Note CD B21Y-46506; B11F/B21Y-91142)

## 16-Bar Blues

Musical notation for the 16-Bar Blues section, consisting of four staves of music in 4/4 time. The notation includes various chords and melodic lines. Chords are labeled above the staves: F7, Bb7, C7, and F7. The notation includes a 'BREAK' label at the end of the fourth staff.

## SOLOS

Musical notation for the SOLOS section, consisting of four staves of music in 4/4 time. The notation includes various chords and melodic lines. Chords are labeled above the staves: F7, Bb7, C7, and F7. The notation includes a 'BREAK' label at the end of the fourth staff and an 'Ends on F7' label at the end of the fourth staff.

## F BLUES SCALE

Musical notation for the F Blues Scale, showing the scale in 4/4 time. The scale is written in treble clef and includes the notes: F, G, A, Bb, C, D, E, F.



# 4. When Sunny Gets Blue



Play 3 Choruses (♩ = 52)

Lyrics by Jack Segal  
Music by Marvin Fisher

Chorus 1: G- C7 Bb- Eb7 FΔ G- A- D7b9

Chorus 2: BØ Bb- A- Ab° G- C7

1. AØ D7b9 2. E- A7 DΔ E- F#- B7

E- A7 DΔ D- G7 CΔ A- D- G7 G- C7

G- C7 Bb- Eb7 FΔ G- A- D7b9

BØ Bb- A- Ab° G- C7+9 FΔ (D7)

## SOLOS

G- C7 Bb- Eb7 FΔ G- A- D7b9 BØ Bb- A- Ab° G- C7 AØ D7+9

G- C7 Bb- Eb7 FΔ G- A- D7b9 BØ Bb- A- Ab° G- C7 E- A7

## BRIDGE

DΔ E- F#- B7 E- A7 DΔ D- G7 CΔ A- D- G7 G- C7

G- A- Bb- Eb7 FΔ G- A- D7b9 BØ Bb- A- Ab° G- C7+9 FΔ (D7)

FΔ F-/Bb Bb7 FΔ